

Sarah's Song

Slow Air

Phil Cunningham

Musical notation for Sarah's Song, Slow Air by Phil Cunningham. It consists of four staves of music in treble clef, key of D major, and common time. The melody is characterized by dotted rhythms and a slow, flowing pace.

The Wise Maid

Bridge

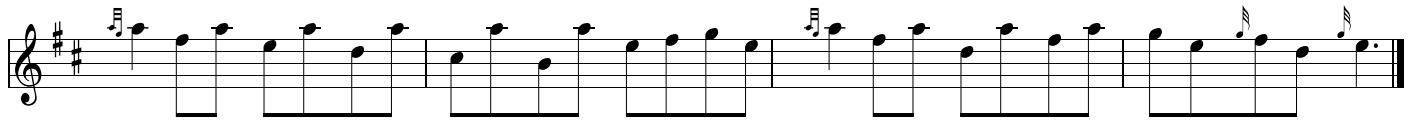
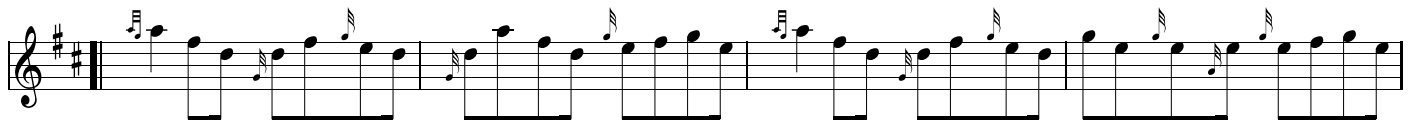
K Stewart

Musical notation for The Wise Maid Bridge by K Stewart. It consists of two staves of music in treble clef, key of D major, and 6/8 time. The melody features a mix of eighth and quarter notes.

The Wise Maid

Reel

Musical notation for The Wise Maid Reel by K Stewart. It consists of four staves of music in treble clef, key of D major, and common time. The melody is a fast, rhythmic reel with many eighth notes.



Jimmy Blue

Hornpipe

